

Title:	Silver Line Intelligent Quote (iQ) Software Export Setup for Integration
Purpose:	Define software changes necessary to allow for multiple export solutions within the Silver Line iQ software for dealer integration.

Prepared by:	Ryan McGurl, iQ Program Specialist
---------------------	------------------------------------

Executive Summary
Integration customers require custom Export Settings within the Silver Line iQ software. This will allow the customer to have multiple export solutions available allowing submission both to their POS system as well as Silver Line manufacturing.

Modifying Security.ini File

1. Locate the security.ini file in C:\Program Files\SLiQ
2. Open security.ini
3. Change the value for PurchaseOrderCkBx and PurchaseOrderGrpBx to a value of "1"

```

security - Notepad
File Edit Format View Help
PromptText=Enter the Code here
PartNumberStaticText=1,By Static Part Number,1
PartNumberDynamicText=1,By Dynamic Part Number
UnitCodeText=1,By Unit Code
ProductCodeText=1,By Product Code

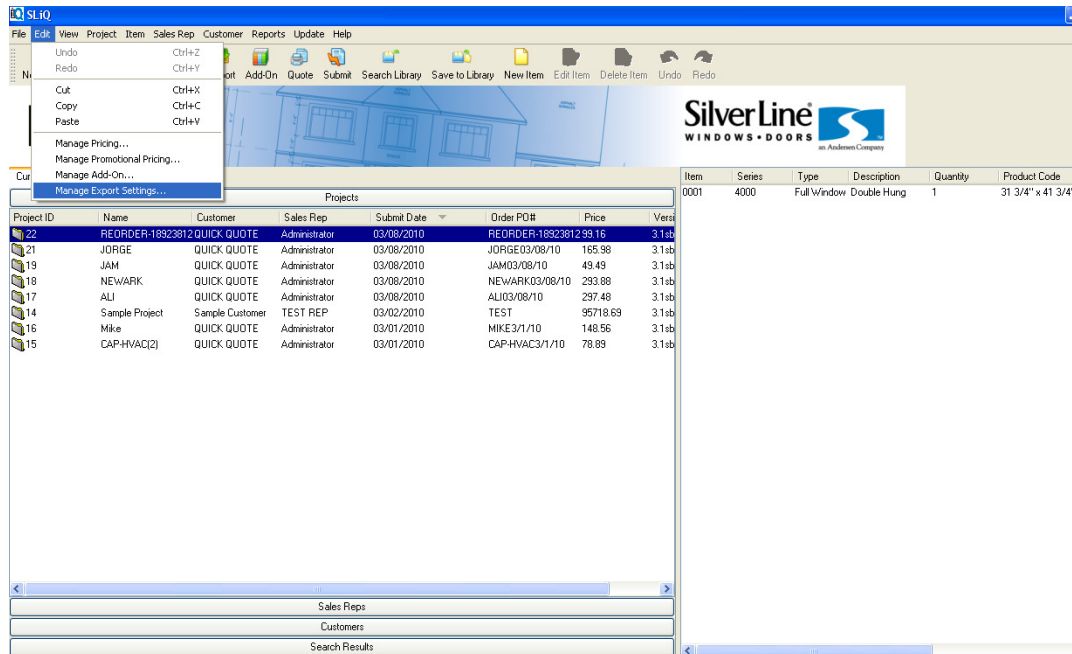
[ComponentBrowserDialog]
ComponentListHeaders=Group
ComponentAttributeListHeaders=Attribute;Value

[ProjectExportDialog]
Headers=Project,Project Price,Project PO,Order PO,Submit Date
Fields=ProjectName,TotalPrice,PONumber,OrderPONum,SubmittedSODate
EditOrderButton=0
PrintDetailButton=0
PrintDetailButtonLabel=Print Order
TotalFtlLineEdit=0
TotalFtlLabel=0
TotalFtlField=TotalOrderFTL
OrderQtyField=OrderQuantity
ExportSolutionFrame=1
ExportSolutionLabelLabel=Submit Type:
SetPONumberButton=1
SetPONumberButtonLabel=set order PO #
SetSubmitDateButton=1
SetSubmitDateButtonLabel=Submitteddate
TotalPriceLabelLabel=Total order Price $
TotalFtlLabelLabel=Total order FTL
NeedPO=1
Defaultorder=0
PurchaseOrderCkBx=0
SalesOrderCkBx=1
  
```

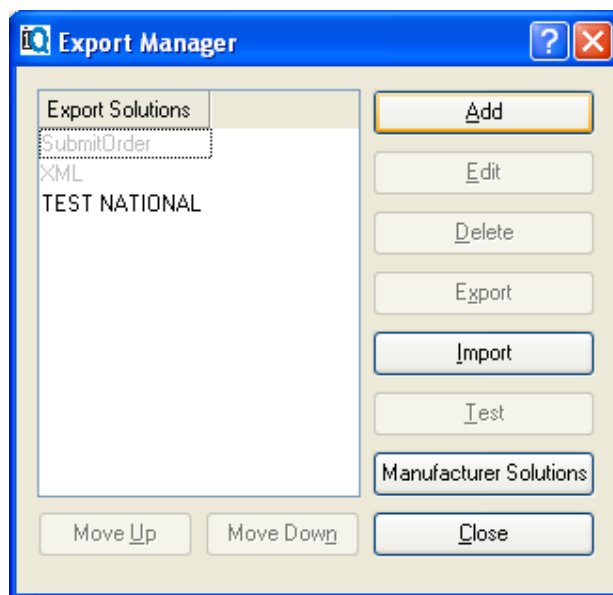
4. Save and Close the security.ini

Changing Export Solutions Dialog

1. From within the Silver Line Intelligent Quote main project window select the "Edit" drop down menu and choose Manage Export Settings



2. Choose "Add" to add a new Export Solution



3. Follow the steps and apply a style sheet if needed (You may define the file name by selecting "Define Filename"). Click "Finish"

4. From the "Export Manager Dialog" choose "Manufacturer Solutions"
5. "Purchase Order" should be set to Back Office solution. "Submit Order" should be set to SubmitOrder

